



ARRECIFE CITY

There's plenty to do in Arrecife, with museums, markets, cafés and restaurants

MARINA OFFICE

MODERN MARINA

Completed in 2014, Marina Lanzarote offers 400 floating berths. Facilities include shops, restaurants, showers, an ATM, wi-fi, water and electricity



WATER DEPTH

Stay within the channel marked as the water gets very shallow on either side

IDENTIFICATION

The long breakwater provides welcome protection along this exposed stretch of coastline



GULL'S EYE

MARINA LANZAROTE

CANARY ISLANDS

28° 57'.41N, 13° 32'.29 W



Marina Lanzarote has undergone a huge redevelopment in recent years, now offering first-class facilities for cruisers and racers from around the world. *Donna Eastlake* learns more

Marina Lanzarote is on the south coast of Lanzarote, looking out towards the west coast of Morocco. Custom

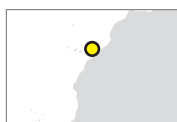
designed to cater to the modern cruising and racing communities, it has quickly grown in popularity.

Just a few decades ago, Puerto de Naos was home to a small but thriving fishing industry, but the year-round reliable breeze off the coast of Lanzarote began to attract sailors in search of good cruising grounds and racers looking for training waters, and the evolution of the area was fast and furious from there.

The now-booming port welcomes visitors from around the world and hosts international sailing events, with Lanzarote regarded as one of the world's top sailing destinations. Fishing is still a valuable contributor,



28° 57'.41N,
13° 32'.29 W



but tourism has grown to be equally important and visitors are well catered for. The town offers an abundance of cafés and restaurants and there's a lovely Saturday market, providing fresh produce from across the island and, of course, fresh fish from the surrounding waters.

You can also tour Lanzarote's vast array of wineries and cheese shops, and then learn about the history of wine production on the island, by visiting the museums in the wine-growing area of La Geria. Alternatively, you could while away the hours in the local bars, continuing your study of Lanzarote wines, as

day slips into night and the sounds of Spanish guitars or the more characteristic timples fill the air.

Family friendly pastimes include exploring the Arrecife History Museum, or taking a tour of the International Museum of Contemporary Art, situated in the old military fortress of the Castillo de San José. There are also countless beautiful beaches around the island. The town's Carnival, coincides with Mardi Gras, and the fiestas de San Ginés, which commemorates the town's patron saint, on 25 August. Visitors can expect music, tapas, dancing and fireworks.

Local berth holder

Tristan and Sue Darkins



We arrived aboard our 1967, 43ft Holman, Meriva, in September 2016. We chose Marina Lanzarote for the

facilities and the location's sheltered sailing area and anchorages. With a heavy boat, tricky to manoeuvre in small spaces, we like the marina's roomy layout and were keen to stop

in a storm-proof location where we felt safe and comfortable.

Carrying out our own repairs, we were really pleased with the local chandlers, who are happy to let us dig around in the back of the shop, for parts. The town's previously large fishing fleet and now healthy influx of yachts, means that the four main chandlers make a good living and offer products for a wide range of vessels, from dinghies to coasters.



24

**NEXT
MONTH**

Mylor Yacht
Harbour, Cornwall

On sale 28 April



MARINA LANZAROTE

MARINA GUIDE

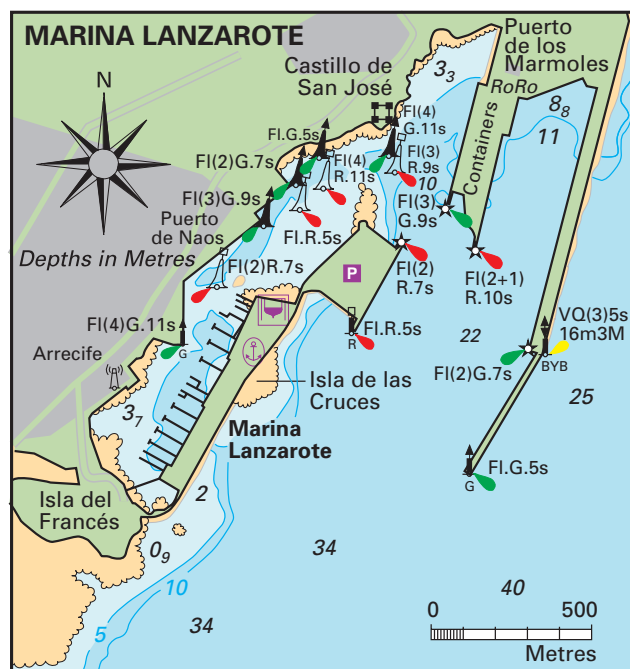
This brand new man-made marina offers shelter from the exposed coast along the north Atlantic. There is little natural protection along this relatively straight stretch of the south coast, and so the marina is perfectly located for cruisers looking for a place to rest for the night.

The marina has 400 floating berths (for boats ranging between 4m and 60m LOA with a maximum draught of 6m). Each berth has access to water and electricity, with free wi-fi for all visitors.

The large new shipyard accommodates one of the island's most well established traditional shipwrights for any classic boats in the area. The more modern side of yard operations include an 820-tonne hoist and two large keel pits. The giant hoist's dimensions provide a much-needed service for the local tourist fleet and artisanal fishing vessels, whilst multiple slings are perfect for cradling larger yachts. The staff at the marina are

incredibly helpful and available 24-7. There are excellent amenities, including a supermarket, laundrette, ATM and gym on site, in addition to the usual services such as showers and chandlery.

The area surrounding the marina is bustling with life, with a variety of lovely restaurants and cafés to enjoy for lunch and dinner. Lilium is a particular favourite for locals, with an award-winning menu and views across the marina. →



KEY TO SYMBOLS

- Boat hoist
- Fuel berth
- Marina car park
- Chandlery/brokerage
- Tide board
- Domestic waste disposal
- Waste oil
- Pump out
- Recycling
- Lifeboat
- Marina

FACTFILE

MARINA LANZAROTE

+34-928-663263

marinas@caleromarinass.com

caleromarinass.com

The marina can be accessed at all times and dock staff are available 24-7.

VHF: Ch 9/16

Wi-fi: Free

Fuel: No fuel dock yet (installation planned for later this year). Puerto Calero is 10nm away and there is a fuel dock there (every day 8.30-19.30).

Utilities: Water and electricity at all berths

ATM: On site

Taxi, car and bike hire:

From tourist information centre in marina

Hotels: Hotel Miramar (10 min walk from marina), Arrecife Gran Hotel (next to the beach).

Length	30 days	Per year
LOA 8	221.62	1704.2
LOA 10	372.55	2865.87
LOA 12	504.07	3984.1

Refer to the marina website for further pricing details.

PASSAGE PLANNING

From the north, the first landmarks will be the brightly lit power station and gas towers, in front of the breakwater

Marina Lanzarote is in Arrecife, within Puerto Naos harbour. It's advisable to maintain a 0.5-mile distance from the shore, along this stretch of coastline, to avoid the reef.

Arriving from the north, the first landmarks will be the brightly lit power station and gas towers, in front of the breakwater. Once round the breakwater, head towards the preferred channel mark (red & green post) on the very end of the container wharf Fl.(2+1)R.10s3M. From there, you'll see the extended Puerto de los Mármoles breakwater, marked with a green mast.

If arriving from the south, the multi-storey Gran Hotel will be visible from at least 3m. Passing the airport on the port side, stay clear of the special marks, which mark a tanker discharge point. The reef is the biggest danger here, marked by an east cardinal (Q(3)10s), but once round, Puerto de Arrecife will come into view with its south cardinal mark (Q(6) Fl.15s.10m5M) on the breakwater.

Upon reaching the Puerto Naos breakwater, the new cruise-liner terminal can be seen at the easterly end of the Puerto Naos harbour wall and this may or may not show on plans as a recent addition. The new cruise-liner terminal is marked at the SW point with red cylindrical tower mark (Fl.R.5s6m3M) and at its NE point with another red cylindrical tower, flashing Fl.(2)R.7s6m3M.

The marina access channel rounding SW into the harbour is clearly marked and lit, dredged to at least 4.3m. Marina buildings and pontoons will be visible to port. The west side of the harbour is reserved for fishing boats.



RIGHT
Charco San Gines in Arrecife is a beautiful bustling area with plenty of cafes and restaurants

BELOW RIGHT
Castillo de San José fort overshadows "The Rising Tide" sculpture by Jason deCaires Taylor and can be seen when entering the marina





CRUISING GROUNDS

Lanzarote is ideally located for cruising the Canary Islands and the west coast of Africa

The first option, perhaps best suited to the less experienced sailor, is to sail around the island of Lanzarote itself. You can perfect your sailing skills in this sunshine idyll, while making the most of the perfect sailing conditions. The full distance is 75nm, and you can take as little, or as long as you like to complete it. If you're interested in getting involved in some racing while in the area, then the J80s do a two-day race around the island, stopping for the night in La Graciosa.

If you have a little longer to spend exploring this beautiful part of the world, then island hopping is the perfect way to go. There are seven islands to choose from and you could visit one or all of them. If it's a vibrant nightlife you're after, head for Tenerife, or if you're looking for a deserted beach, where you don't pass another individual all day, then set your course for Gran Canaria. You could, of course, visit them all. You'll need a minimum of two weeks, though it's recommended that

ABOVE
Playa de Papagayo, Lanzarote, is just one of the stunning areas you can explore when sailing around the island

BELOW LEFT
Dolphins are regular visitors to the coast of Lanzarote

you allow at least three, in order to fully explore and enjoy the islands.

If you're interested in going further afield, and many who sail to Lanzarote are, then you can sail the 223.16nm from Lanzarote to Agadir. Agadir is a city along Morocco's southern Atlantic coast, in the foothills of the Anti-Atlas Mountains. A resort destination, it's known for its golf courses, wide crescent beach and seaside promenade lined with cafes, restaurants and bars.



USEFUL CONTACTS

Tourist information
discoverlanzarote.com

Charter companies and sailing schools
Lava Charter
+34-928-663-209
es.lavacharter.com

Atlantic Sailing – RYA Training Center
Tel: +34-632-847-938
atlanticsailing.org

RYA Training Centre Endeavour Sailing
+34-928-849-670
endeavour-sailing.co.uk